



Te Kohanga Reo o Ranana (Maori Language nest, London)



TE KOHANGA REO
LONDON

Being with Hinemihi: Embodied, material, visual and diverse cultural realities

Te Kohanga Reo o Ranana

Rosanna Raymonds

Ruth Panelli

Dean Sully



Ngāti Ranana (London Maori Club) performing at the Kohanga Reo annual Hangi, Clandon Park.



Hinemihi Maintenance: Ngāti Ranana/Kohanga Reo/ UCL Institute of Archaeology



Hinemihi and her people



Inside Hinemihi



Tekoteko, gable figurehead carving



Amo, carved posts, Hinemihi's legs



Raparapa, carved bargeboard ends, Hinemihi's hands



Clandon Park, West Clandon, Surrey, UK.

The Palladian Mansion



Hinemihi "The Maori house
down in the Garden"



Ko au te whare

Whatitoka
(Door)
"mouth"

Matapihi
(Window)
"eye"

Tekoteko (Carved Gable figurehead)

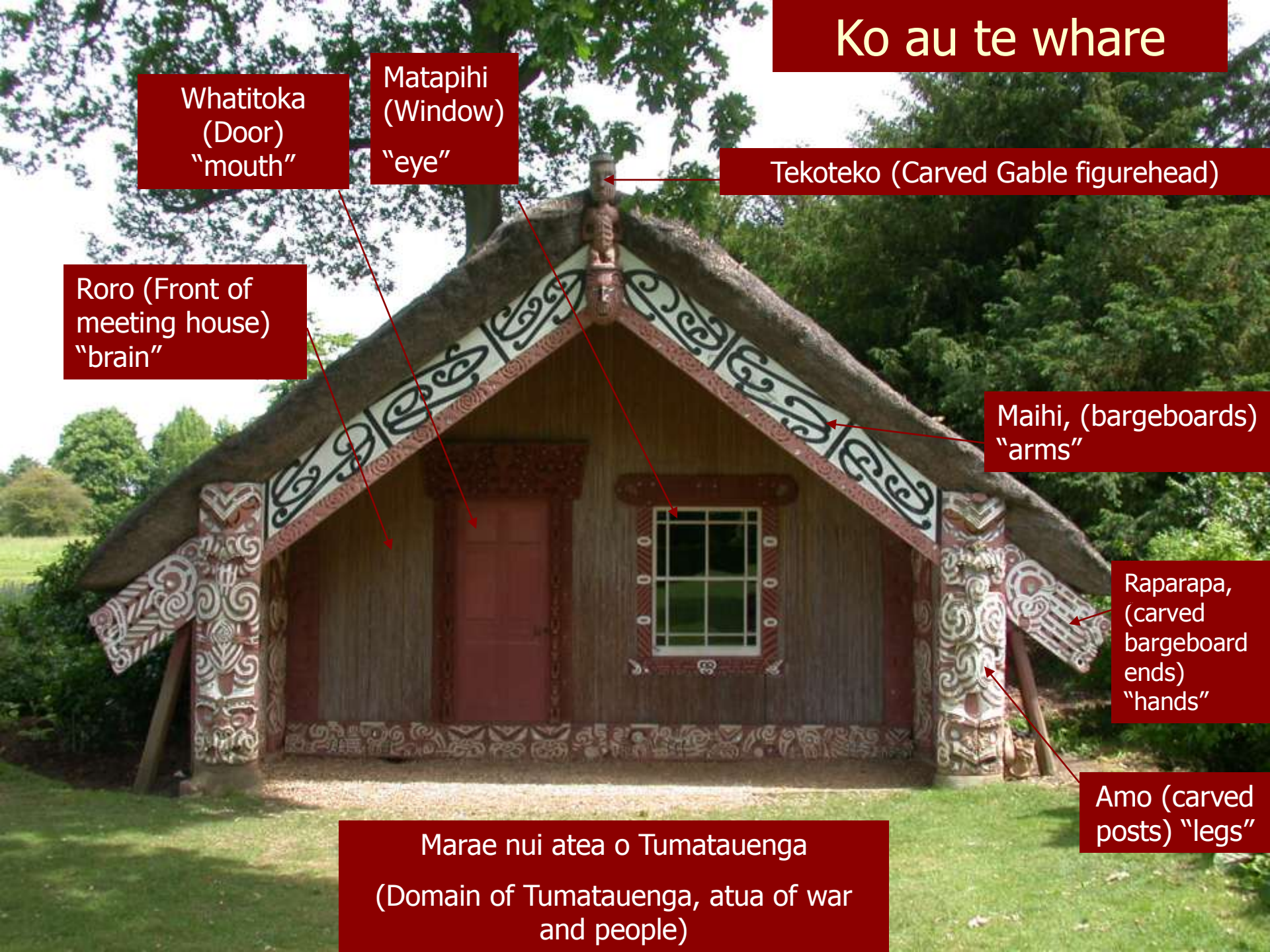
Roro (Front of
meeting house)
"brain"

Maihi, (bargeboards)
"arms"

Raparapa,
(carved
bargeboard
ends)
"hands"

Amo (carved
posts)
"legs"

Marae nui atea o Tumatauenga
(Domain of Tumatauenga, atua of war
and people)



Hinemihi and her people Ngāti Hinemihi, Schuster whanau



Whakarewarewa, Aotearoa, (New Zealand) 2009

Hinemihi's people (1881)
Ngāti Hinemihi, etc.



Hinemihi, 1881
Te Wairoa, Rotorua, New Zealand (Aotearoa)



Chief Aporo Wharekaniwha, with Ngāti Hinemihi whanau

The Volcanic Eruption of Mount Tarawera, New Zealand (Aotearoa) 1886



Hinemihi 1886 Following the volcanic eruption, Te Wairoa, New Zealand (Aotearoa)

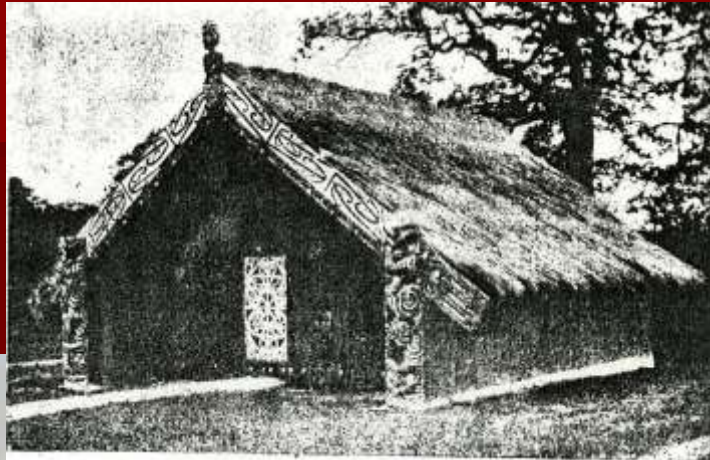




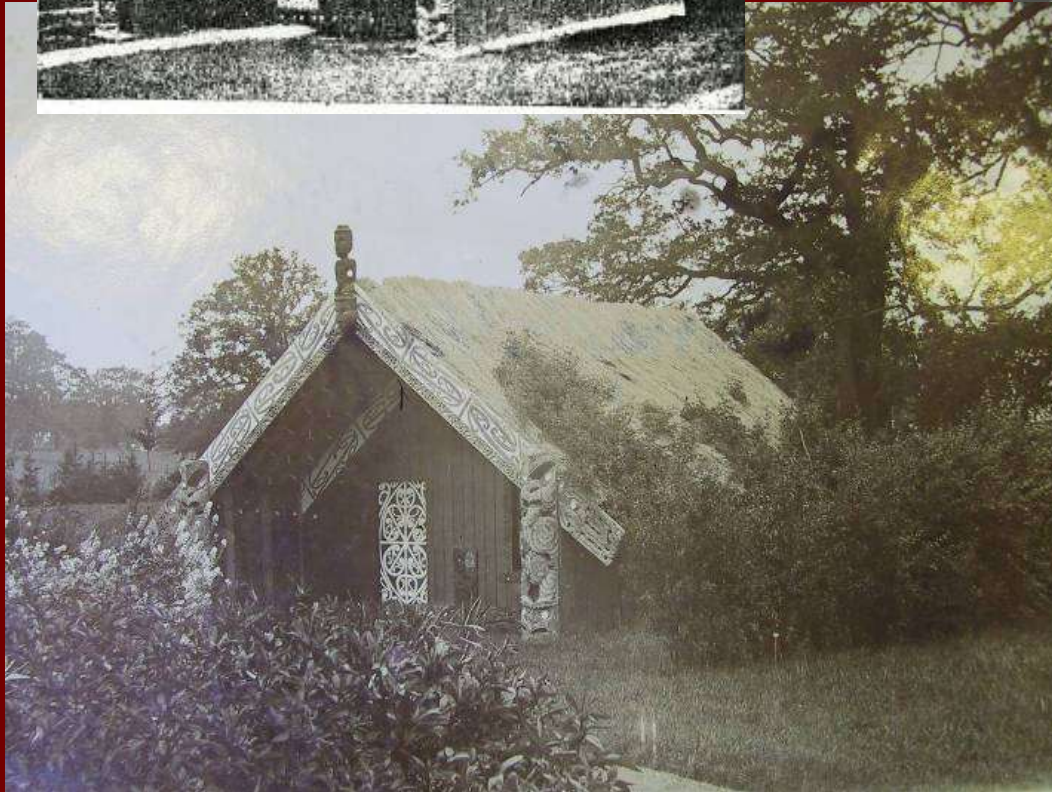
4th Earl of Onslow, Governor
of New Zealand 1889-1992

Hinemihi at Clandon Park, The Onslow Family, etc.

(1899)



(1903)



(1914)

Hinemihi (1919) The Onslow Family & Maori Re-appropriation



Convalescing Maori soldiers, were responsible for relocating Hinemihi from her lakeside location at Clandon to the east lawn where she resides today.

Hinemihi at Clandon Park, The Onslow Family, etc.



(1943)



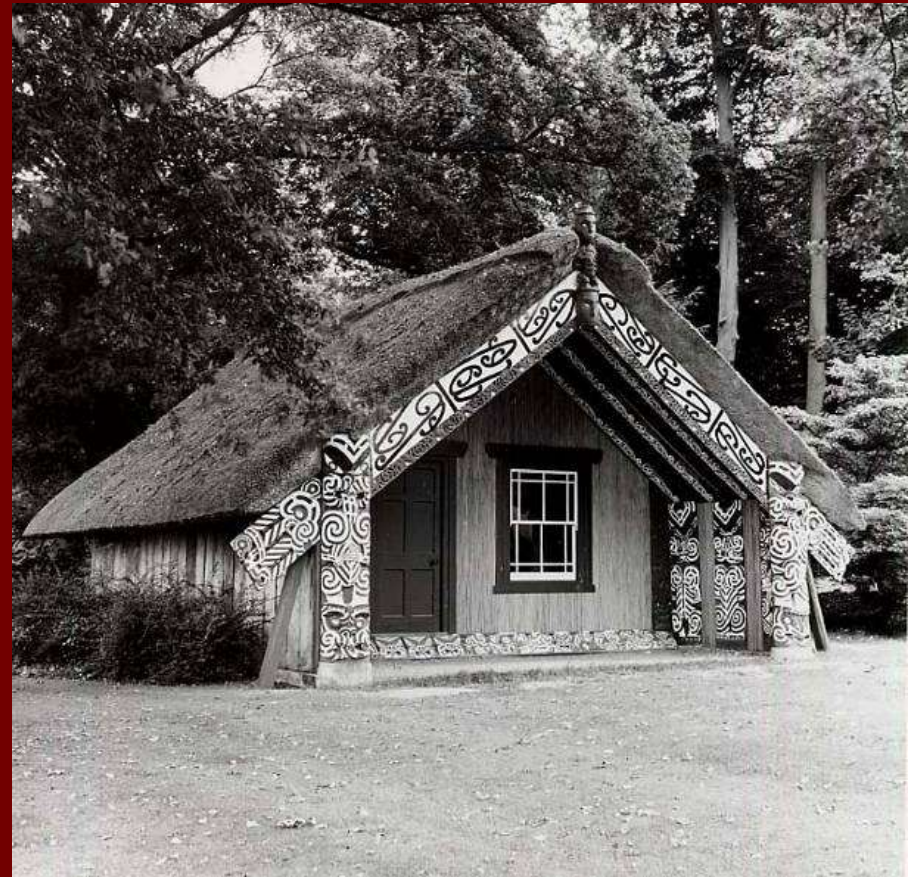
(1958)

Hinemihi at Clandon Park, The National Trust, etc.



(1960)

(1981)



The National Trust's Hinemihi

“..they (*the National Trust*) show little appreciation of the house as a cultural object with its own system of symbols, as distinct from a collection of carved posts and painted scroll designs to be restored”

(Kernot 1975)

“Hinemihi is fully restored with the partnership of the Maori people, and is a focus for Maori culture in the UK.”

The current (2007) National Trust vision for Hinemihi

Hinemihi (1995) New Carvings for Hinemihi at Clandon Park from Ngāti Hinemihi



Emily, Robert, Jim and Cathy Schuster, Colin Tihi, Robert Rika, Ngāti Hinemihi, etc.

Ngāti Hinemihi's Hinemihi

“Because we could feel the presence of our ancestors, including those who sheltered inside Hinemihi during the eruption, as well as those who didn't make it to safety. By touching the carvings we could hear their screams and feel their pain”



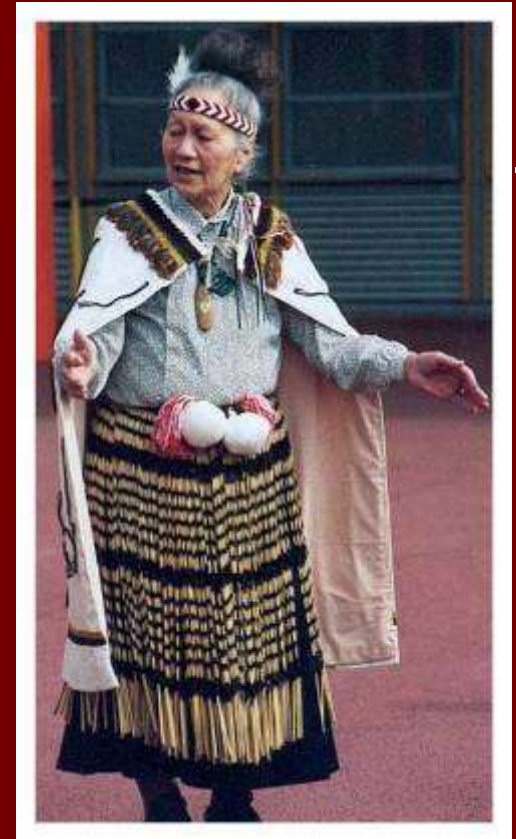
(Emily Schuster Ngāti Hinemihi 1995 quoted in Hooper-Greenhill 1998)



Ngāti Ranana' s Hinemihi

“... she is someone who you should come and see when you are sick and unhappy and who will restore your sense of Maori identity”

(Rahera Windsor, *kuia* (elder) of Ngāti Ranana, Greenhill 1998)



Hinemihi as the adopted meeting house of Ngāti Ranana, used as a functioning marae since 1995



A Centre for
Maori culture
in the UK?



Te Kohanga Reo and Ngāti Ranana at the Kohanga Reo annual Hangi, Clandon Park.

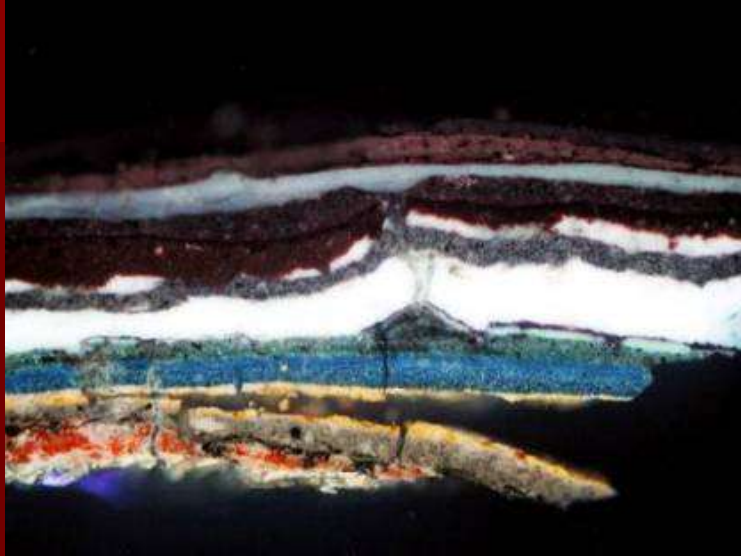


Conserving Hinemihi /Building Relationships

Hinemihi Maintenance Days: Ngāti Ranana, Kohanga Reo, UCL Institute of Archaeology



Conserving Hinemihi: creating the "original" Hinemihi



WHAT Architecture's concept drawings for Hinemihi's development into a centre for Maori culture in the UK



A future for Hinemihi



“Before” Conservation

“Hinemihi is a living building not a dead artifact. The wharenui should not be preserved through authentic reconstruction but allowed to grow, to evolve as a living space” Anthony Hoete, WHAT_Architecture



“After”
Conservation?

“whare NOW!”
“Being With Hinemihi”

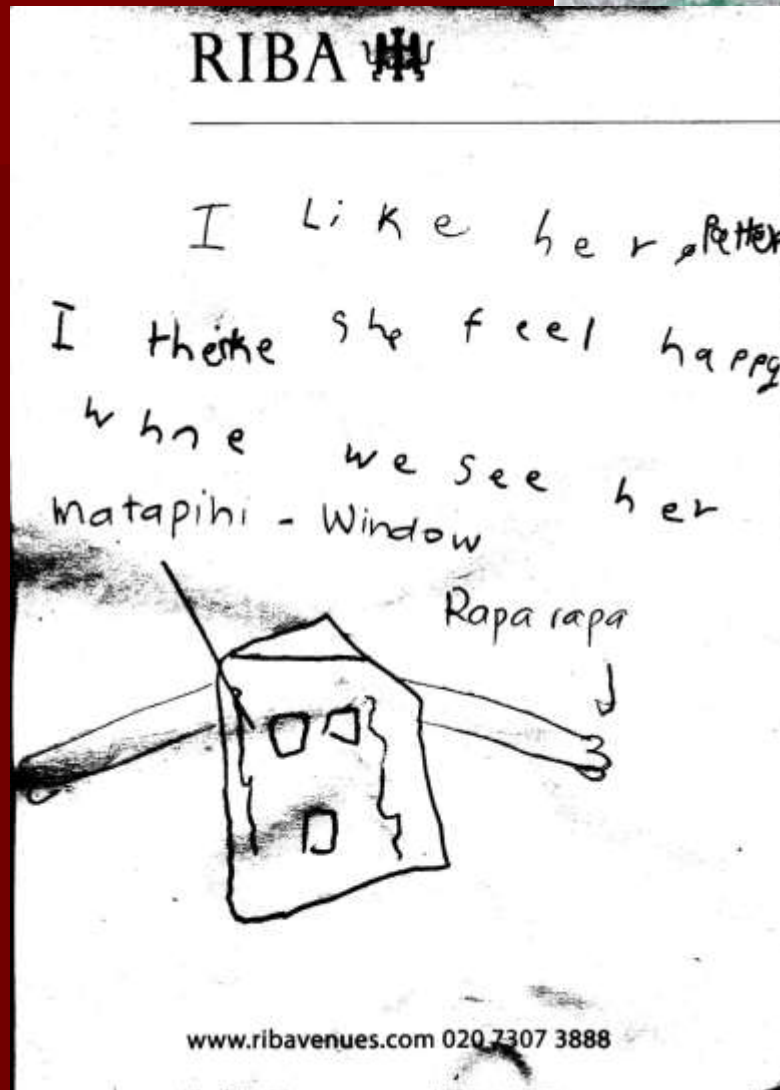


“whare NOW!” “Being With Hinemihi”



Joseia (age 1)

Isabella



Henry

Tosin



RIBA # TOSIN

I like hinemihini because she's pretty. She makes me feel important because she is special and she is my sister.



www.ribavenues.com 020 7307 3888

RIBA # HENRY

Hinemihini reminds me of Kohanga. It reminds me of New Zealand. I like it because it is made of sticks and wood. It means me & hongi.



www.ribavenues.com 020 7307 3888

Eimii

RIBA 

Sam at pit

Hangi

Cake Stall

Food

Garden Center

Ram

Alphaz

Beats

Kohanga

Hide & seek

www.ribavenues.com 020 7307 3888



Eimii




Hangi, cake stall, Garden Center, Sam at the pit, raffle, Kohanga / Alphaz / Beats, Hide & seek, money, Maintenance day, performances, shoes, fun, rain, freinds, powhiri, tractors, sheep, snakes, shuns, BEEP BEEP BEEP

Goats, Hano's, Pickle, Mix, friends & family. Trees



www.ribavenues.com 020 7307 3888

RIBA 

Sade 

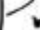
- ♥ tractors !!!
 - ♥ hangi
 - ♥ stakes
 - ♥ Garden centre
 - ♥ maintenance
 - ♥ Apple trees
 - ♥ Kohanga
 - ♥ Beats
 - ♥ cake store
 - ♥ sheep
 - ♥ deserts
 - ♥ swan stealer
 - ♥ Rain
 - ♥ Kumara
 - ♥ Fruit
 - ♥ Rugby
 - ♥ Billingham
 - ♥ Ngati Ra
- ♥ Goats
 - ♥ hema s
 - ♥ cand drinks
 - ♥ Pick n Mix
 - ♥ greasy foreheads
 - ♥ running away
 - ♥ Rabbits
 - ♥ Lizards



Sade

Kaitlyn

RIBA 

Kaitlyn P. 

- ♥ Hangi
- ♥ Ngati Ra
- ♥ Beats
- ♥ Kohanga
- ♥ Rain
- ♥ cake stalls
- ♥ raffle
- ♥ Bam at pit
- ♥ TRACTORS!
- ♥ Sheep
- ♥ Swans
- ♥ BEEP! BEEP!
- ♥ garden center
- ♥ Hide and Seek
- ♥ Billingham
- ♥ goats
- ♥ llamas
- ♥ jump over fence!
- ♥ Pick'n' mix
- ♥ greasy foreheads!
- ♥ chasing people + football!
- ♥ Snakes
- ♥ Rabbits
- ♥ Lizards
- ♥ shoes



www.ribavenues.com 020 7307 3888

I am at the pit
cake sale
tractors friends and family
maintenance
day sheep
goats ngati ranana kohanga
pick 'n' mix rabbits beats of polynesia
deserts
billingham performances swans
meringues llamas lizard
hide and seek kumara
money
pouhira rattle apple trees
shoes rain
greasy foreheads garden center
chasing people for footballs beep! beep!
horses food! snakes

**"I like Hiniemihi because
she's Pretty. She makes
me feel Important
because she is special
and she's my Ancestor."
-Tosin**

Hiniemihi reminds me of Kohanga

It reminds me of New Zealand

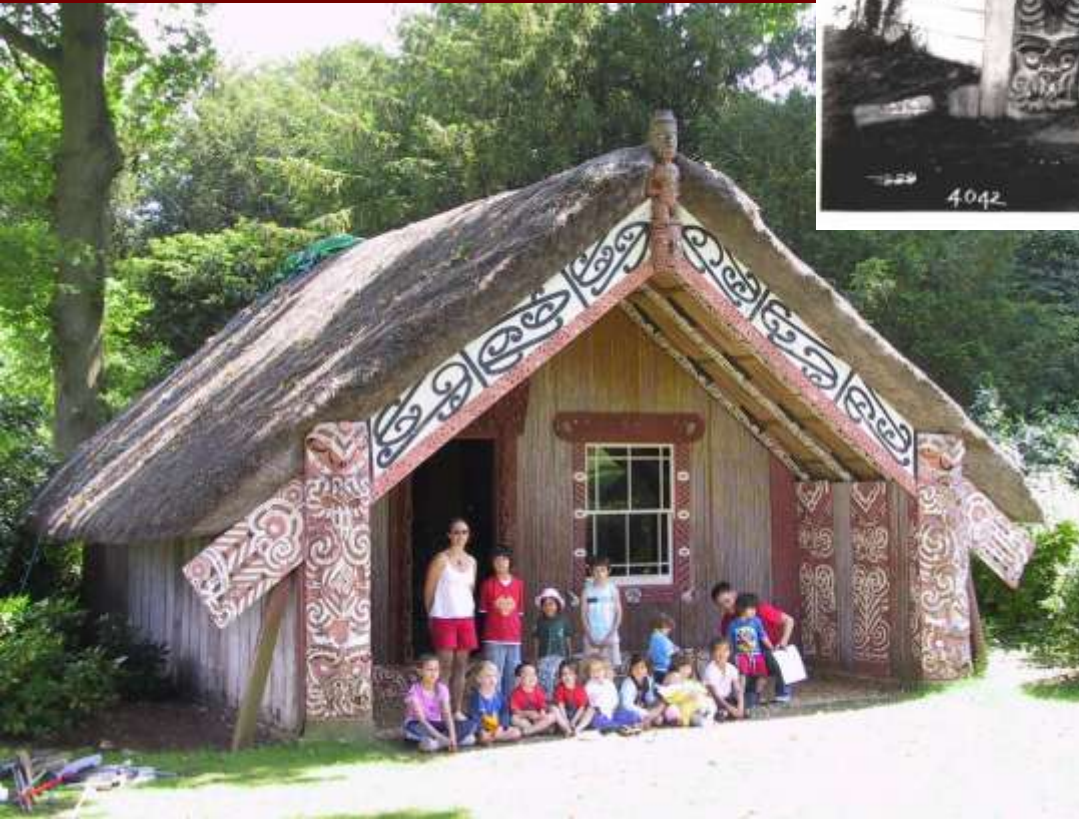
I like it because its made of Sticks
and Wood

It reminds me of Hangi

-Henry

**I like her patterns,
I think she feels happy
when we see her
-Isabella**

Children from Lake Tarawera
Native School, 1881



Children from Te Kohanga Reo
o Ranana, 2007



Hinemihi and her people



Hongi (sharing breath)

